

lightENUPTM



LightenUp combines intelligent design with 4K Print Technology and our IlluminateTM backlit fabric to set a new standard for portable backlit displays.

Backlit displays can be used any time you want to call attention to your message, including:

Trade Shows & Events

On a crowded trade show floor full of booths and displays, it can be hard to get noticed. Backlit displays attract attention and help you stand out from the crowd.

Retail

You have only seconds to capture a consumer's attention and backlit graphics are a great way to focus their attention where it counts.

Museums

The glow of backlit graphics brings vibrancy to displays and can even be used to visually guide patrons through an exhibit.

Healthcare

Backlit displays create an inviting and welcoming environment, which may even help reduce stress and anxiety that often accompanies a trip to a clinic or hospital.

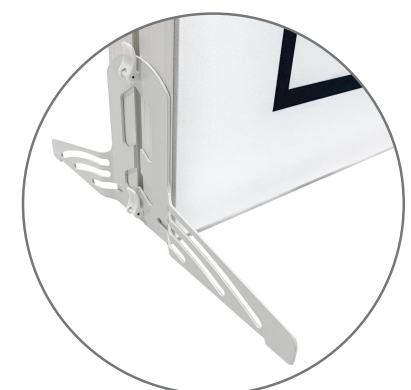
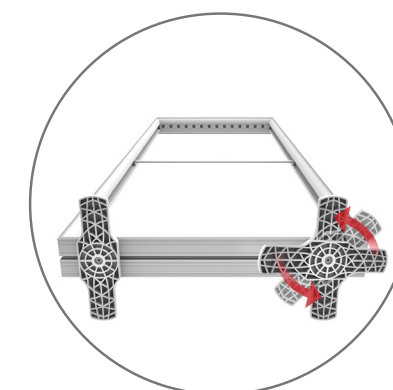
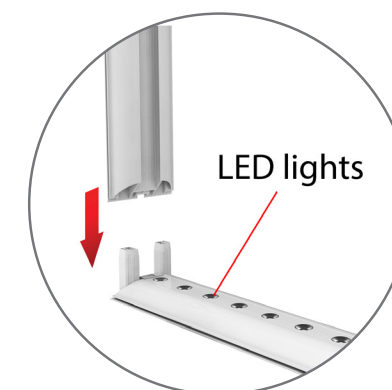
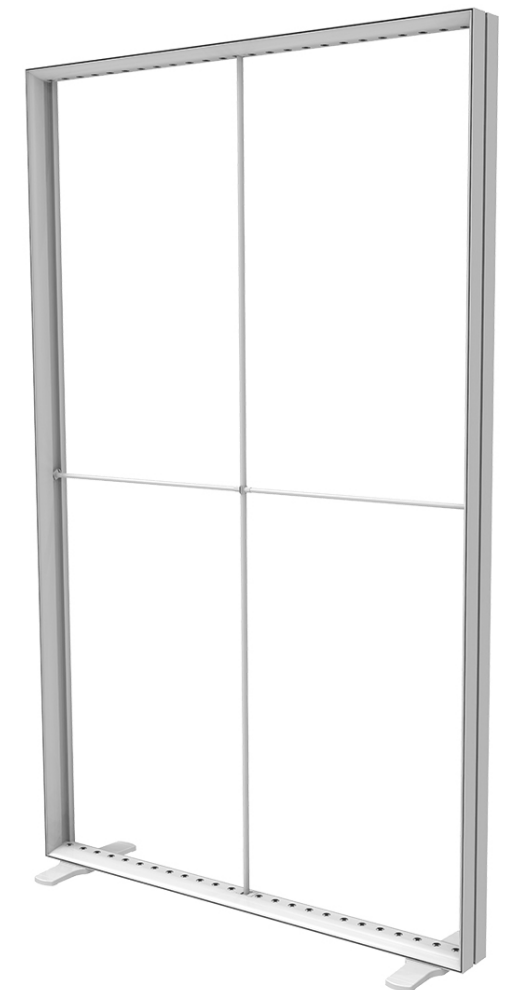
Hospitality

Hotels, convention centers, and restaurants need to be able to quickly switch out graphics to support a constant turn over of events. Backlit displays let your message be seen.



LightenUp™ incorporates many design features to make set-up, take-down, and transportation quick and easy. LightenUp requires NO TOOLS to set up, making it truly a “plug and play” backlit display. Details like these can only come from a partner who knows all the “in’s and out’s” of display products.

- Extruded PVC frame is lightweight, yet durable with a profile that adds both structure and function
- Integrated lights and wiring means LightenUp is truly “plug and play”
- No tools are required for set-up or when connecting.
- Frame extensions allow each LightenUp frame to be set up at two heights: 6½' and 8'.
- Integrated sturdy PVC foot rotates into position to provide a stable base for light boxes.
- Proprietary Z-bent metal foot intelligently designed to make installing graphics a breeze and brings exceptional stability to larger, stand-alone light boxes.
- Proprietary interior support bars are gray instead of white to produce an evenly lit graphic free of “hot spots”
- Lay-flat electrical plug keeps the light box standing tall and straight
- Frames can be quickly joined together by adding a small connector to the outer channel
- Accessories such as shelving and monitor mounts can be easily integrated by connecting into the inner channel



lightENUP:



ILLUMINATE™
BACKLIT FABRIC

Illuminate™ is the next evolution in backlit fabrics.

Illuminate reliably bounces back from the wrinkly rigors of the road, quickly smoothing itself out when installed.

All with no need to roll the fabric on a tube. Vivid, soft to the touch, wrinkle resistant, and powered by

4K Print Technology, Illuminate is sure to dazzle.

lightENUP:



Powered by
4K Print
Technology