



Visual Communication Boards

Dry Erase Boards Customized with Your Design

Customized communication boards are erasable, with custom graphics designed specifically to fit your needs and extend your brand.

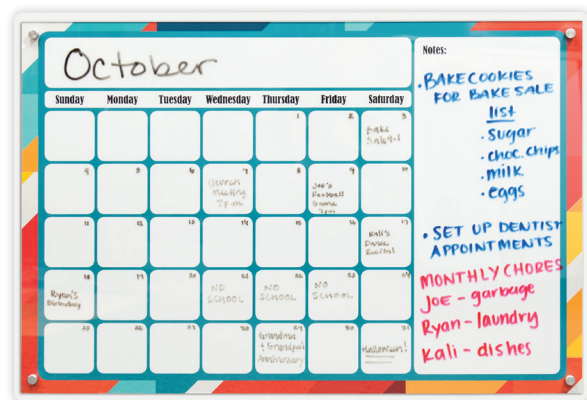
Visual Communication Boards are essentially a combination of a digitally printed full color sign and a dry erase board. Communication boards have many uses in nearly any type of facility.

- **Education** – Calendars, team play diagrams, announcements
- **Healthcare** – Portable and in-room patient communication boards, nursing stations, daily meal specials
- **Manufacturing** – Track daily metrics, work volume and safety within departments
- **Meeting Room**– Meeting agendas calendars, branded dry erase boards
- **Restaurant/Retail** – Post daily meal specials, announcements and employee schedules



Classic Communication Boards

With flush wall mounts and a digitally printed full color graphic insert, classic communication boards are a great way to reinforce your brand for business, non-profit or education markets.



Construction

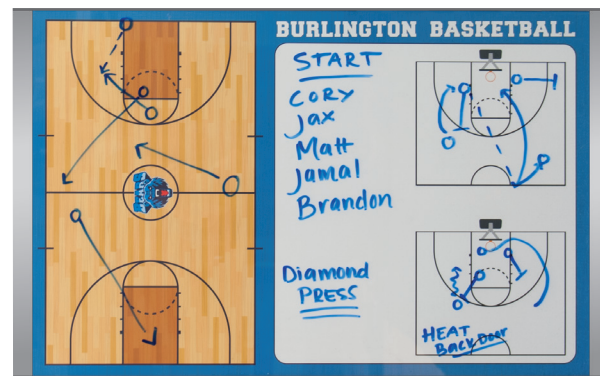
Board— $\frac{1}{8}$ " aluminum composite backer and $\frac{1}{8}$ " clear acrylic face with dry erasable surface.

Insert—15 oz. scrim vinyl

Standard Sizes H" x W"
12" X 18"
18" X 24"
20" X 30"
24" X 36"

Elegant Communication Boards

Add a high-end look to your communication board with a sleek aluminum frame. Dry erasable plastic lens is easily removable allowing you to quickly change graphic inserts.



Construction

Frame—satin silver aluminum with clear plastic lens that keeps insert protected. Thicker frame rails will always be on the right and left sides, not top and bottom.

Insert—20 mil. white plastic polystyrene

Orientation	Standard Sizes H" x W"
Square	14" x 15 $\frac{1}{8}$ "
Vertical	17" x 12 $\frac{1}{8}$ "
Horizontal	11" x 18 $\frac{1}{8}$ "
Vertical	24" x 20 $\frac{1}{8}$ "
Horizontal	18" x 24 $\frac{1}{8}$ "
Square	28" x 29 $\frac{1}{8}$ "

Snap Frame Communication Boards

Snap frames secure the communication board in place during use but flip open to allow for easy graphic changes. This is the best choice when frequently cleaning the board and changing graphics.



Construction

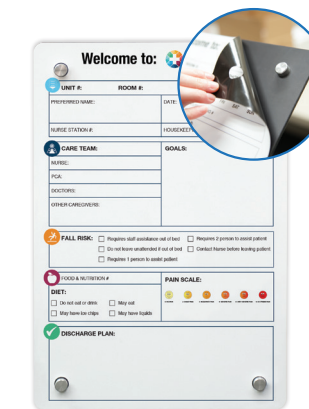
Frame—silver aluminum. Clear plastic lens included to keep the insert protected.

Insert—60 mil. white plastic polystyrene

Standard Sizes H" x W"
9 $\frac{1}{8}$ " X 12 $\frac{1}{8}$ "
12 $\frac{1}{8}$ " X 18 $\frac{1}{8}$ "
18 $\frac{1}{8}$ " X 23 $\frac{1}{8}$ "
23 $\frac{1}{8}$ " X 29 $\frac{1}{8}$ "
25 $\frac{1}{8}$ " X 37 $\frac{1}{8}$ "

Magnetic Receptive Communication Boards

With an easy-to-attach and easy-to-replace magnetic insert, magnetic receptive communication boards are convenient if you need to change out your boards quickly and frequently.



Construction

Board—30 mil. magnet laminated to $\frac{1}{8}$ " aluminum composite.

Insert—10 mil. magnetic receptive with dry erase laminate.

Standard Sizes H" x W"
12" X 12"
12" x 12"
12" x 18"
12" x 18"
18" x 24"
24" x 24"
24" x 36"

Portable Communication Boards

Take your communication board with you on the go! This 2-sided portable board is easy to travel with and allows you to communicate where it's most convenient.



Construction

Board— $\frac{1}{8}$ " clear acrylic face and back. Subsurface printed black boarder. $\frac{1}{32}$ " black acrylic spacer layer. Thumb notch included for easy insert removal.

Insert—20 mil. white plastic polystyrene. Double-sided full color digital printing.

Standard Sizes H" x W"
9" x 12 $\frac{1}{2}$ "
12" x 18"

