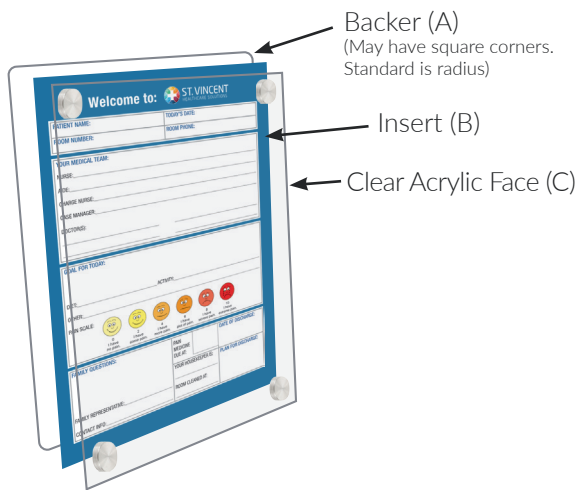


CLASSIC COMMUNICATION BOARDS

Hardware & Installation Instructions

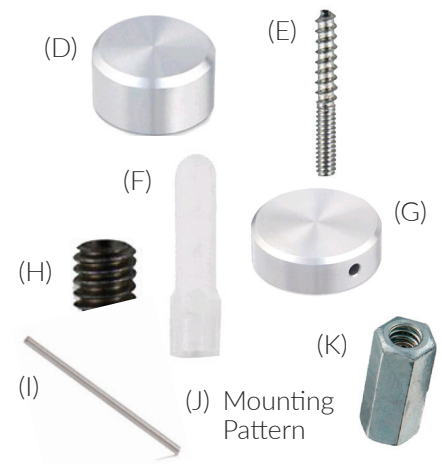


Standard Flush Mount

- (x4) Standard Caps (D)
- (x4) Screws (E)
- (x4) Wall Anchors (F)
- (x1) Coupling Nut (K)

Security Flush Mount

- (x4) Security Caps (G)
- (x4) Screws (E)
- (x4) Wall Anchors (F)
- (x4) Adapters (H)
- (x1) Security Tool (I)
- (x1) Coupling Nut (K)



Installation Instructions

STEPS FOR INITIAL INSTALLATION

1. Disassemble shipped board by removing wing nuts from clear fasteners
Note: be careful not to scratch inside of clear acrylic face (C) **Caution - This multi piece sign may have sharp edges. Please install with care and be cautious when handling the board. Gloves may be considered useful.**
2. Place Backer (A) against wall in desired location and mark holes with pencil
3. Using 5/32 drill bit; drill required holes and insert Wall Anchors (F) and Screws (E)
Important - Be sure to insert screws at 90° angle to wall to insure proper board alignment and function.
4. Place Backer (A) onto Screws (E) and ensure proper alignment of all pieces
5. Place Insert (B) onto Screws (E) with desired side facing out
6. Remove blue protective film from Clear Acrylic Face (C) and place onto Screws (E) being careful not to scratch the acrylic
7. Secure the board with the Standard Caps (D) until hand tight
 - If utilizing Security Caps (G), insert Security Tool (I) into the hole on side of cap, tightening until cap cannot be removed by hand (store security tool in a safe place for future use)

WARNING! Over-tightening of caps may cause acrylic or other parts to crack; doing so may also strip the aluminum mounting caps.

STEPS FOR REPLACING INSERT

1. Remove Standard Caps (D) and Clear Acrylic Face (C), placing on a soft surface to prevent scratching
2. Replace or adjust insert as needed before reinstalling Clear Acrylic Face and Standard Caps
3. Note that neither the backer nor mounting bolts need to be removed

Care and Usage

Dry Erase Usage

- Only use low-odor dry erase markers for ease of cleaning (Expo low odor dry erase are a recommended brand)
- Markings will be more challenging to remove if allowed to set for multiple days. It is recommended that the board be cleaned regularly

Cleaning Tips and Tricks

- The insert and inks are water resistant. Should moisture appear behind the acrylic face, simply remove and wipe dry

WARNING! Usage of abrasive cleaners may scratch the clear acrylic face.

CAUTION! Usage of ammonia based cleaning products may cause the acrylic face to become foggy. Utilize dry erase board cleaners or water with a mild detergent.

- Commonly used disinfecting products such as Oxivir® and Clorox® Wipes are safe to use
- Be advised, while the acrylic is not shatterproof, this product is 2 to 3 times more impact resistant than double strength window glass, and about 4 to 5 times more impact resistant than wire glass or other glasses

